

# SWR

---

## STEEL WIRE ROPE

ENGINEERED COMPONENTS  
& SOURCING

[www.steelwirerope.com](http://www.steelwirerope.com)



## ABOUT SWR

We are a UK company specialising in sourcing and supplying engineered components for major industries. Over 30 years in business means we have built up a network of trusted

---

## CHALLENGE US TO SAVE YOU MONEY

We collaborate closely with you during the design and prototyping stages to find cost-effective solutions without compromising on quality. We have previously saved our customers up to

---

## WE ALWAYS DELIVER

All components are produced in accredited facilities with established supply chains.

Whether you require a bulk, one-drop delivery or annual call-off order, a dedicated Account Manager will take care of the entire process. Rest assured, our passionate team always deliver

## HELP IN FOUR STEPS



### Clear Communication

Send us your drawings or prototype and we'll use our network to find the best price.



### Samples and Prototypes

If you're happy with the price, we'll get a sample produced for your approval.



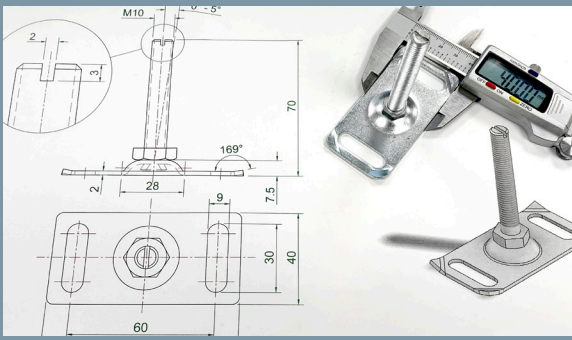
### Source & Manufacture

We will manage the entire manufacturing process. Saving you time, hassle and money.



### Delivery

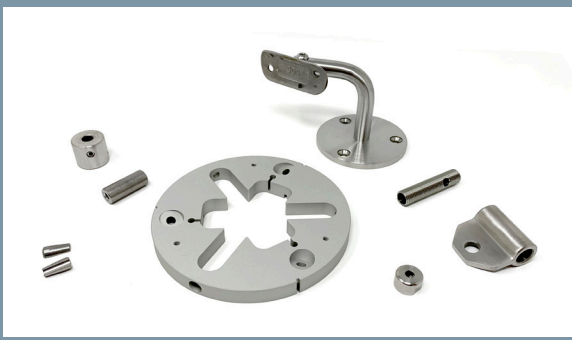
We take care of the import and delivery of your goods using our global logistics network.



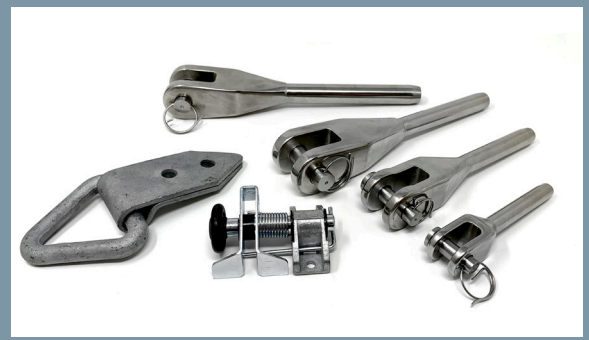
**DESIGN SERVICE**



**PROTOTYPING**



**MACHINED PARTS**



**DIE CASTING & FORGING**



**PRESSED PARTS**



**TURNED PARTS**

## **MATERIALS**

We can deliver engineered components in the following materials:

- Mild Steel
- Stainless Steel
- Aluminium
- Brass & Copper
- Moulded Rubber
- Plastics

## **FINISHES**

We supply parts in finishes that improve durability under certain environmental conditions. Including:

- Galvanising
- Sherardising
- Plating
- Polishing
- Anodising

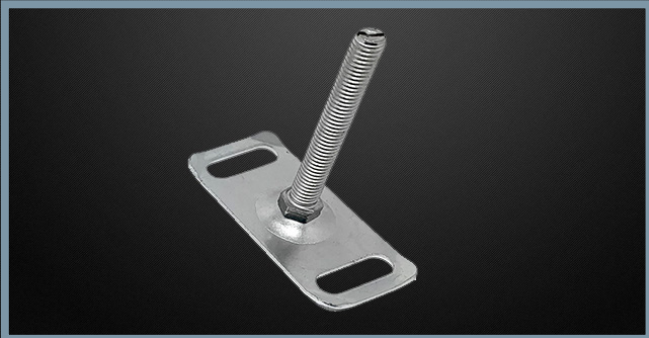
## OUR WORK



Part Description: Bespoke Tripod  
Material: 316 Stainless Steel  
Application: Speaker Stand  
Quantity: 1,000



Part Description: Wire Rope Terminal Bolt  
Material: 316 Stainless Steel  
Application: Commercial Blind Systems  
Quantity: 2,500



Part Description: 70mm Levelling Foot  
Manufacturing Process: Pressed  
Material: Carbon Steel  
Application: Drainage System  
Quantity: 30,000



Part Description: 4-Hole Eye Plate  
Manufacturing Process: Pressed and Welded  
Material: 316 Stainless Steel  
Application: Wall Plate for tensioned canopy  
Quantity: 10,000

## GET IN TOUCH



ORDER BY PHONE  
+44 (0)1442 353005



ORDER BY EMAIL  
sales@steelwirerope.com



VISIT OUR WEBSITE  
www.steelwirerope.com

ADDRESS: Units 2-4 Eastman Way, Hemel Hempstead, Hertfordshire, HP2 7DU